



Bracknell Forest  
**Community Safety  
Partnership**

# Bracknell Forest Community Safety Partnership (CSP) Annual Progress Report – 30 November 2023

Alison O'Meara  
Head of Community Safety  
Bracknell Forest Council

Temporary Chief Inspector Andrew Grahame  
Deputy Local Police Area Commander  
Thames Valley Police



# Content

- Information about the CSP
- Progress against CSP Key Focus Areas 2022/23
- Reported Crime and Anti-Social Behaviour (ASB)
- Questions

1.

## Information about the CSP





Bracknell Forest  
**Community Safety  
Partnership**

# Community Safety Partnerships



# Legislative Framework of CSPs

Establishment of CSPs and their statutory duties are laid out in:

- Crime and Disorder Act 1998
- Crime and Disorder (Formulation and Implementation of Strategy) Regulations 2007

# Statutory Duties of CSPs or Local Authorities

CONTEST (Prevent Strand) – UK Counter-Terrorism Strategy

Anti-Social Behaviour, Crime and Policing Act 2014

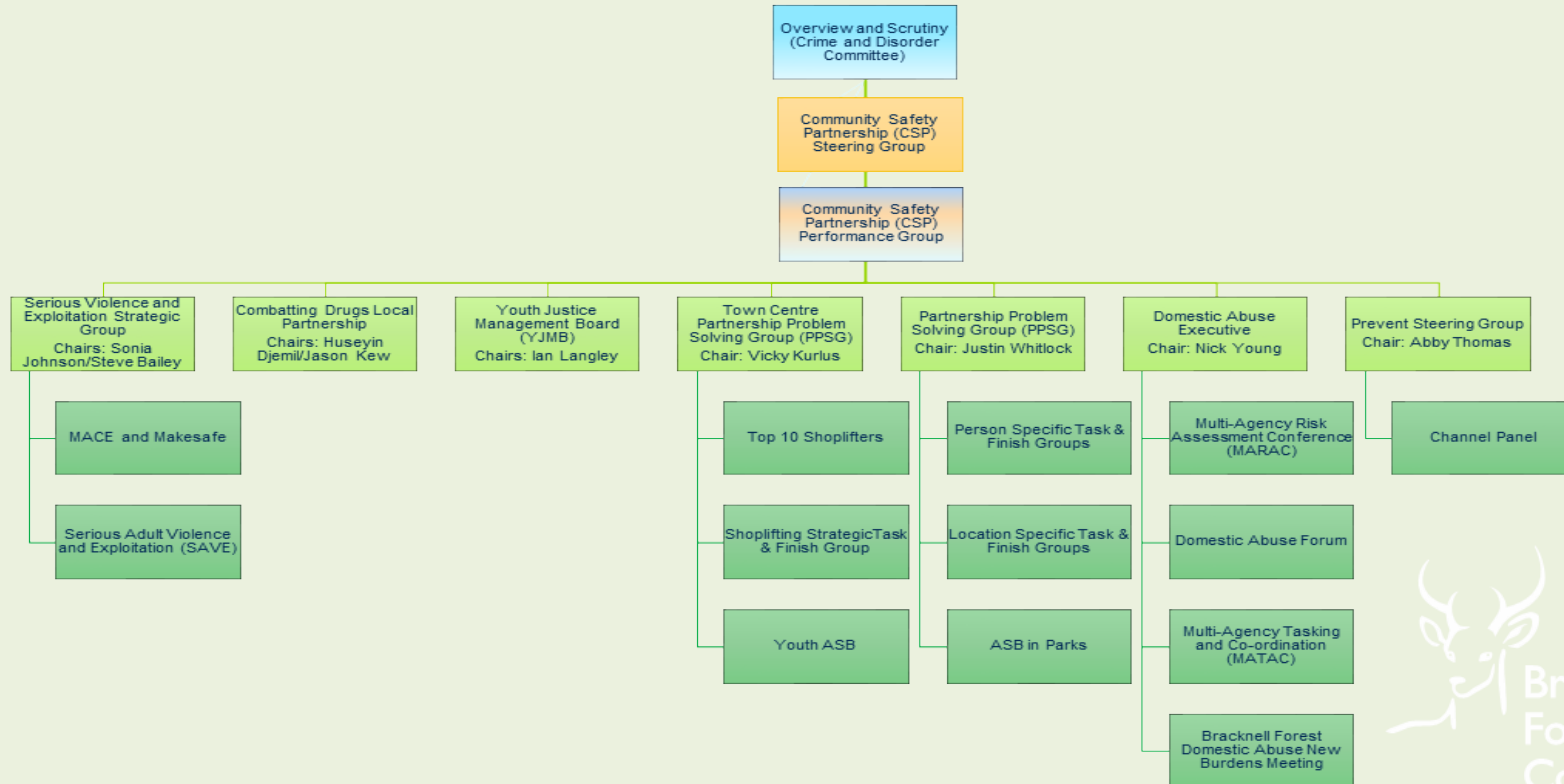
Modern Slavery Act 2015

Domestic Abuse Act 2021

Police, Crime, Sentencing and Courts Act 2022

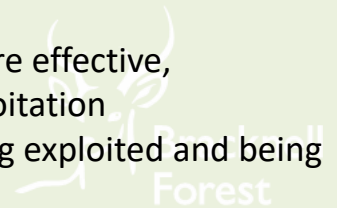


# CSP Sub-Group Structure



# CSP Sub-Group Purpose

- **Prevent Steering Group (Statutory)** – strategic group to safeguard children and adults by protecting and diverting them away from being drawn into terrorist activity
- **Channel Panel (Statutory)** – operational group to ensure that vulnerable children and adults receive support before their vulnerabilities are exploited by those that would want them to be drawn into terrorism, and before they become involved in criminal terrorist-related activity
- **Domestic Abuse Executive (Statutory)** – strategic group to improve outcomes for victims of domestic abuse, including their children, by identifying and addressing gaps in support, including those within safe accommodation
- **Domestic Abuse Forum** – a forum which identifies and promotes good practice so that professionals can work more effectively in partnership to reduce the incidence of domestic abuse in Bracknell Forest
- **Partnership Problem-Solving Group** – operational group to tackle complex and challenging crime and disorder issues of individuals and/or locations across the wider borough
- **Town Centre Problem-Solving Group** - operational group to tackle complex and challenging crime and disorder issues of individuals and/or locations in the town centre
- **Serious Violence and Exploitation Strategic Group (Statutory)** – strategic group to ensure effective, coordinated service provision is in place for those at risk of serious violence and/or exploitation
- **MACE/Makesafe** – operational group to safeguard children at risk of going missing, being exploited and being a victim of serious violence
- **Adult Serious Violence and Exploitation Group (SAVE)** – operational group to manage and support habitual knife carriers, safeguard adults at risk of serious violence and exploitation and tackle problematic hot-spot locations





# Link between CSP and BFC

**Bracknell Forest  
Council Plan 2023-2027 (DRAFT)**

**Borough priority:**  
Engaged and Healthy Communities

**Goal:**  
Residents have a safe and affordable  
place to live



**Bracknell Forest  
Community Safety Partnership Plan  
2022-23**

**Key Focus Areas**



**CSP's Responsible  
Authority's Work  
Plans**

**OPCC Police and  
Criminal Justice  
Plan 2021-2025**

# CSP Resources

People



BFC Community  
Safety Service

Money



Partnerships Fund (Police and Crime Commissioner)

DA Support in Safe Accommodation (Department of  
Levelling Up, Housing and Communities)

CSP

Assistant Director:  
Early Help &  
Communities

Head of Community  
Safety

CSP Business Support  
(P/T)

Community Safety  
Officer

Community Safety Officer  
(P/T) & Serious Violence  
Reduction Officer  
(P/T Fixed term)

Enhanced Case  
Manager

Domestic Abuse  
Strategic Lead (P/T)

Domestic Abuse  
Administrator (P/T)

- CSP administration and business co-ordination

- ASB Lead
- Town Centre Problem-Solving

- SV Duty
- OPCC Partnership Fund management
- Modern Slavery
- Exploitation

- Prevent and Channel
- Borough-wide Problem-Solving
- IOM
- Plain Talking
- DA Perpetrator work
- Hate Crime
- Data

- DA Executive management
- DA Training
- Strategy Development
- Communications and awareness
- Data
- DA Commissioning

- Safe Accommodation Strategy Administration and Business Support

**Key:**  
P/T – Part time  
DA – Domestic Abuse  
ASB – Anti-Social Behaviour  
SV – Serious Violence  
OPCC – Office of the Police & Crime Commissioner  
IOM – Integrated Offender Management

2.

# Progress against Key Focus Areas 2022/23



## **CSP Key Focus Areas 2022/23**

**1 Tackle exploitation and serious violence across all ages**

**2 Reduce town centre anti-social behaviour and crime including shoplifting**

**3 Reduce harm caused by domestic abuse**

- Management of perpetrators and enforcement**
- Delivery of the Safe Accommodation Action Plan**

## **Ongoing Monitoring and Response**

**1 Borough-wide crime and anti-social behaviour hotspots**

**2 Burglary**

**3 Vehicle crime**

# Key Focus 1: Tackle exploitation and serious violence across all ages

Serious Violence Duty

Serious Adult and Violence Exploitation (SAVE)

All-age Exploitation Strategy

Exploitation Training and Awareness

Fraud Victim Support



# Key Focus 2: Reduce town centre anti-social behaviour and crime

Youth Disorder and Safer Streets 4

Shoplifting

Public Spaces Protection Order (PSPO)



# **Key Focus 3: Reduce harm caused by domestic abuse (Management of perpetrators and enforcement)**

Who's in Charge

Domestic Abuse Perpetration Service (DAPS)

Multi-Agency Tasking and Co-ordination (MATAC)

Domestic Violence Protection Notices/Orders





# Key Focus 3: Reduce harm caused by domestic abuse (Delivery of the Safe Accommodation Action Plan)

Sanctuary Scheme

New Domestic Abuse Support Roles

Cost of Living Resources

Professional Training on Trauma



# Case Study 1:

## ASB/Cuckooing/Substance Misuse/Vulnerability

- Adult with care and support needs
- Victim and perpetrator of Domestic Abuse
- Accommodated with floating support in place
- Escalating drug and alcohol abuse
- Reports of ASB at property
- Suspected of being 'cuckooed'
- National Referral Mechanism (NRM)
- Referral into the Partnership Problem-Solving Group (PPSG)
- Partial Closure Order
- Specialist Offender Manager facilitated engagement and provided support
- Person was supported with a move out of area

# Case Study 2:

## Complex DA and substance misuse

- Adult attended New Hope for help
- Coercive and controlling behaviour from a parent
- Multi-Agency Risk Assessment Framework meeting held
- Plain Talking Therapy
- Housing Options identified
- Abuse intensified and police became involved
- Secure accommodation arranged
- Person stopped turning to drink and drugs
- Found employment
- Continues to be supported

## **Case Study 3: Domestic Abuse Safe Accommodation**

- Female experiencing domestic abuse in family home
- Mental health needs increased and became unemployed
- Initial move into refuge and assessments completed
- Multiple referrals and applications were made as a result
- Granted support through a part-time personal assistant
- Moved into permanent settled accommodation
- Offered paid employment

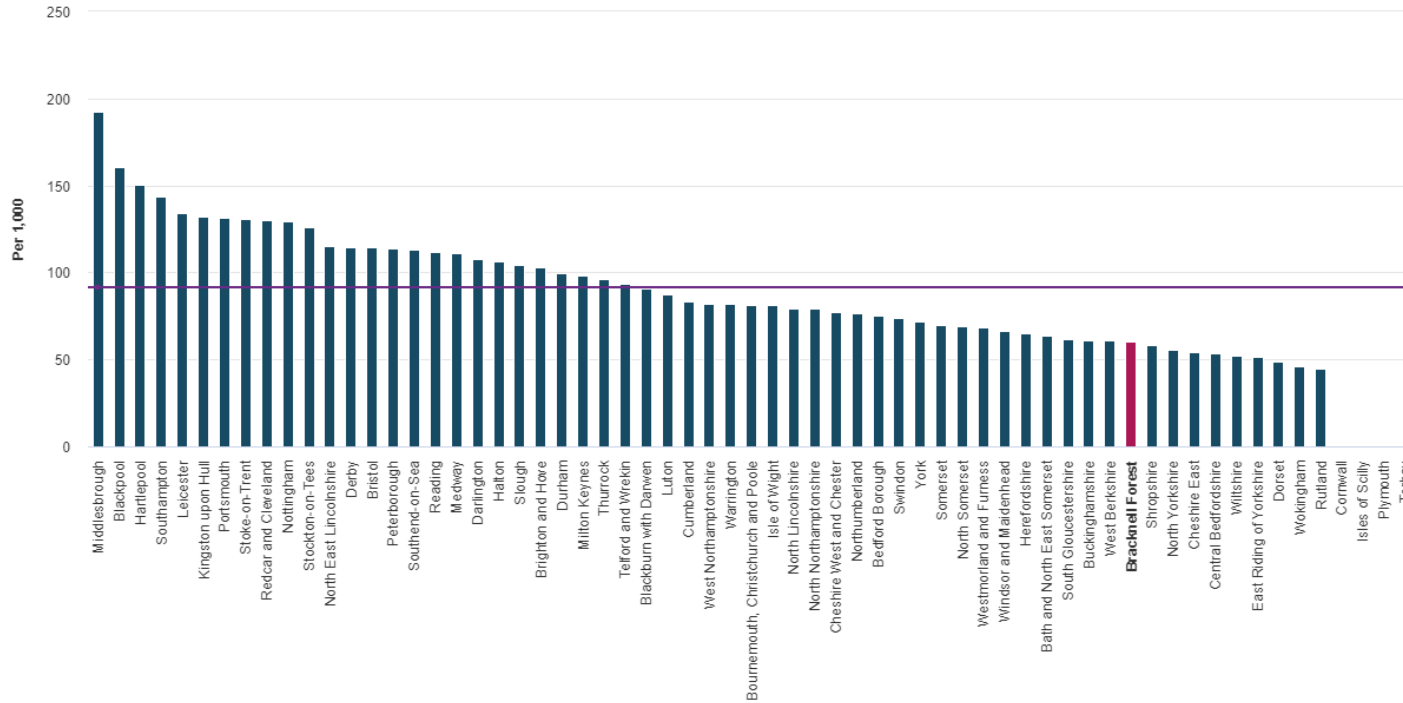
**3.**

## Reported Crime and ASB





### Total recorded offences (excluding fraud) (offences per 1,000 population) (2023 Q1 (12 months ending)) for All English unitary authorities



- Total recorded offences (excluding fraud) (per 1,000 population) 2023 Q1 (12 months ending)
- Mean for All English unitary authorities: Total recorded offences (excluding fraud) (per 1,000 population) 2023 Q1 (12 months ending)
- Bracknell Forest (Lead area)



<b>% change on last year</b>	<b>Violence with Injury</b>	<b>Violence without Injury</b>	<b>Harassment</b>	<b>ASB</b>	<b>All Crime</b>
<b>Bracknell Forest</b>	<b>762 (253 DA) -1%</b>	<b>1109 (794 DA) +2%</b>	<b>1155*  +30%</b>  *Please note that there are no DA figures available.	<b>227*  +8%</b>  *Please note that there are no DA figures available.	<b>7673 (1356 DA) +9%*</b>  *Please note that there were 37 crimes that were not mapped but included in our LPA figures
<b>Thames Valley</b>	<b>17,738 (5607 DA) -0%</b>	<b>50,755 (17,836 DA) +7%</b>	<b>5630 (1200 DA)  +23%</b>	<b>4323  +13%</b>	<b>183,165 (29,639) +3%</b>

**Crimes involving a knife  
(excluding possession)**

**% change on last year**

**2022/2023**

**Bracknell Forest**

**39  
(11 DA)  
-7%**

**Thames Valley**

**1222  
(219 DA)  
-1%**

Knife enabled crime has shown a significant decrease. As an LPA we continue to robustly deal with these types of offences and these figures depict how a targeted response can have a positive impact. With the combination of educational talks, engagement with schools, thorough investigations, and weekly knife crime meetings the figures reflect the determination to reduce such offences.



<b>Formal action taken against Domestic Abuse</b>	<b>2021/22</b>	<b>2022/23</b>
<b>Outcomes as a % of investigations</b>	<b>15% (TVP 13%)</b>	<b>13% (TVP 13%)</b>
<b>DVPNs*</b>	<b>7</b>	<b>14</b>

**\*Domestic Violence Protection Notices**

<b>Formal action taken against Sexual Offences as a % of investigations</b>	<b>Rape</b>	<b>Other Sexual Offences</b>
<b>Bracknell Forest</b>	<b>92 (53 DA) +9%</b>	<b>+31%</b>
<b>Thames Valley</b>	<b>1358 (626 DA) +19%</b>	<b>+28%</b>

4.

## Questions

